

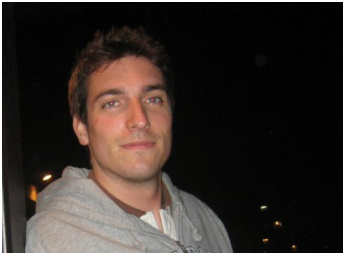
Andrew Ellis
www.andrewellis.org

...walksh a r e

contents | 1 overview | 2 user profiles & scenarios | 3 wireframes

OVERVIEW

The purpose of this application is to share 'annotated walks' with friends. A user can trace a route on the map, drop pins along the way, and then add notes and photographs to add interesting facts and visuals. After the route is created, a user can save and send it to a friend.



NAME

Christian

FROM

Wiesbaden, Germany

LIKES

Travel, Photography,
Socializing

PROFESSION

Business Administration

NEEDS

To show his friends the places he has been and the experiences he had through photography.



NAME

Joseph

FROM

Solana Beach, California

LIKES

Using his smartphone for everything, walking

PROFESSION

Chemical Engineer

NEEDS

Giving recommendations to places he has been before.



NAME

Kent

FROM

Providence, Rhode Island

LIKES

Socializing, Teaching,
Architecture, Cities

PROFESSION

Architect, Designer, Professor

NEEDS

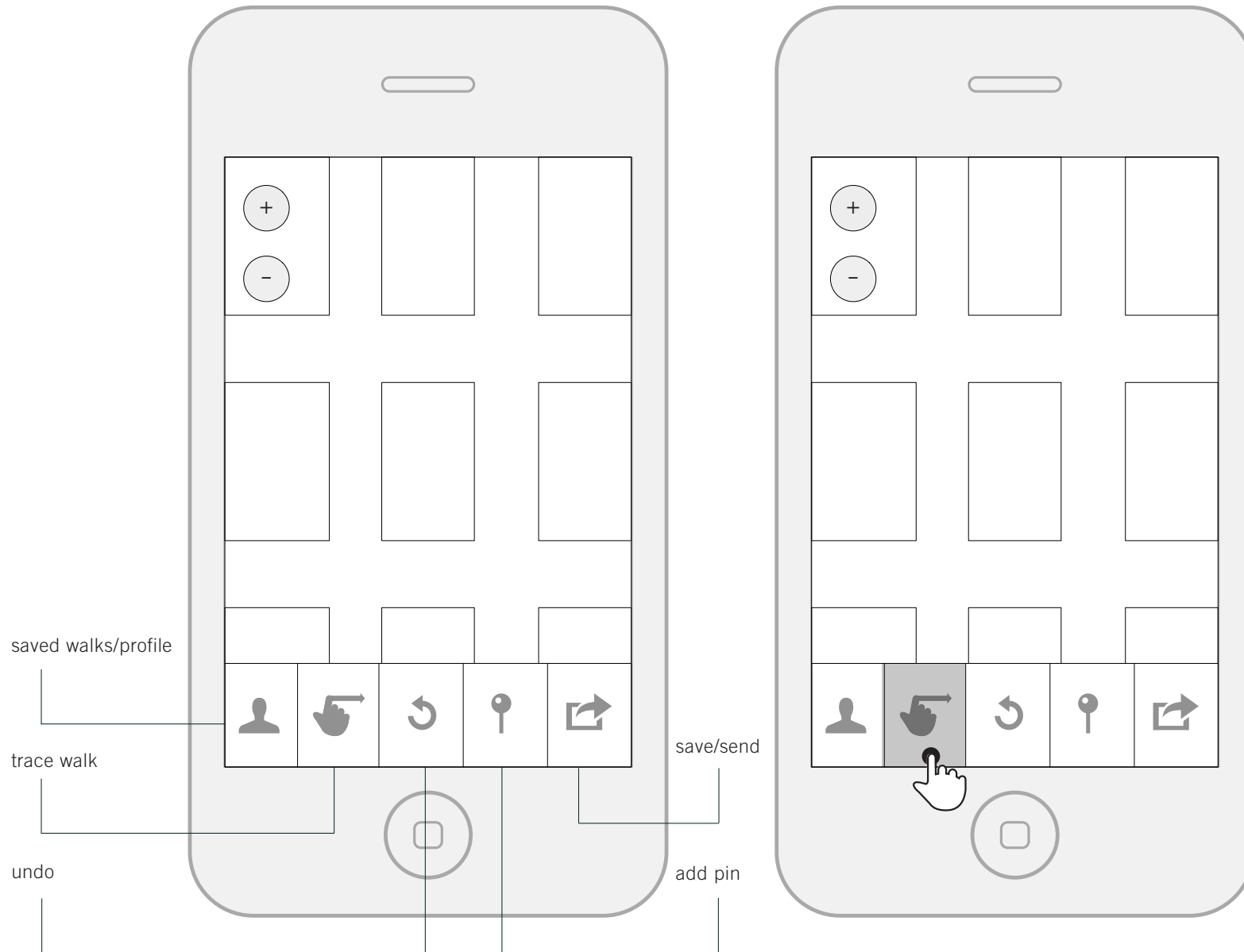
To keep track of the places he has been and share them with his family and friends.

USER SCENARIO

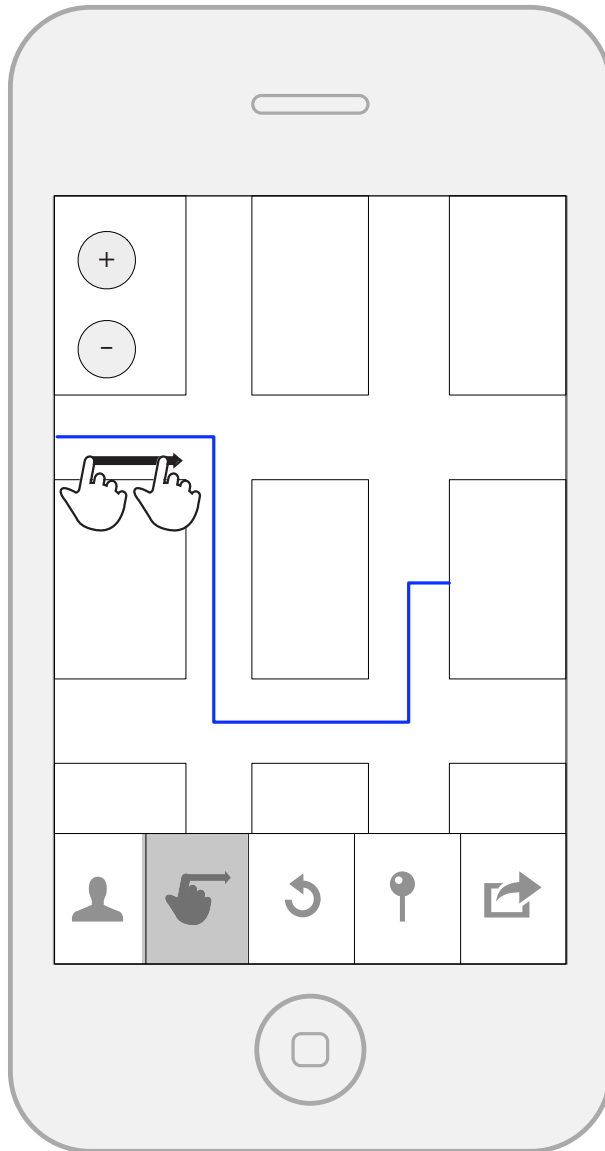
Joseph has a friend visiting from out of town. The friend would like to go into the city and have a walk to check out the sites. Joseph traces a route on his phone to visit the park, a few museums, and some of the more interesting neighborhoods to see by foot. He adds some pins with any information his friend may need along with a few recommendations for food and cafes to sit and have a coffee at. He then sends the walk to his friend by email and saves it in case he has any other out of town visitors.

VIEW THE MAP

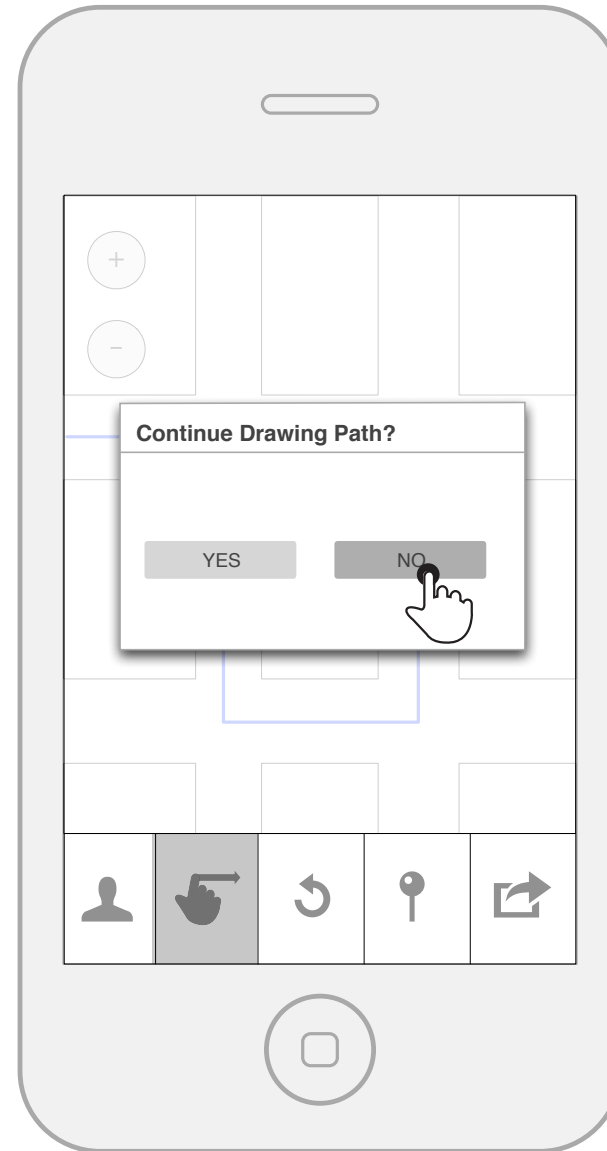
SELECT THE 'TRACE WALK' TOOL



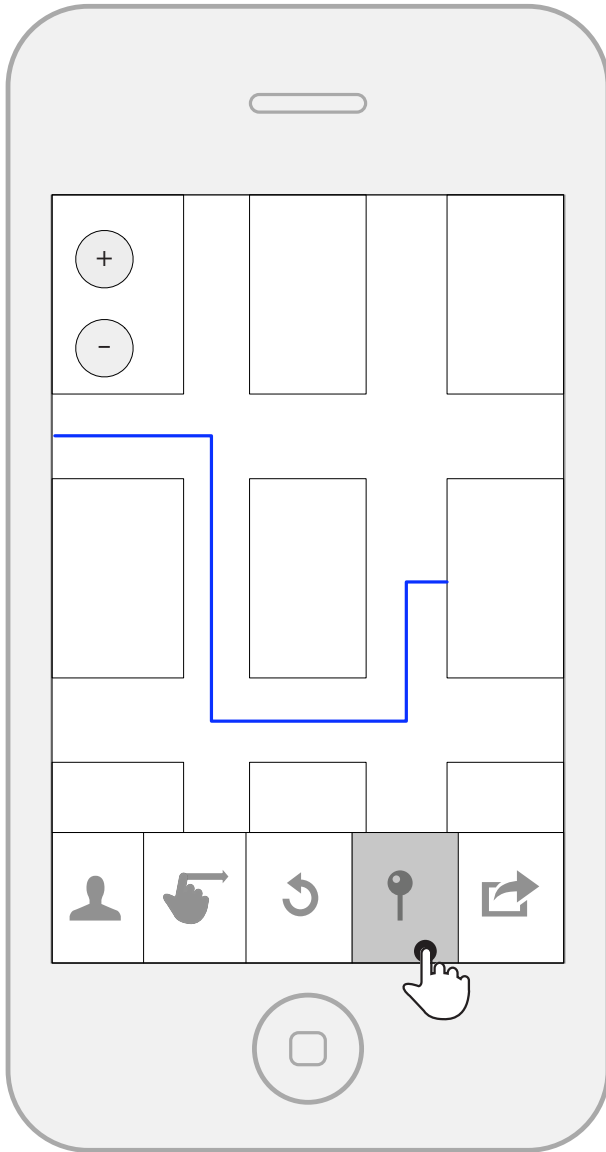
TRACE THE WALK/ROUTE



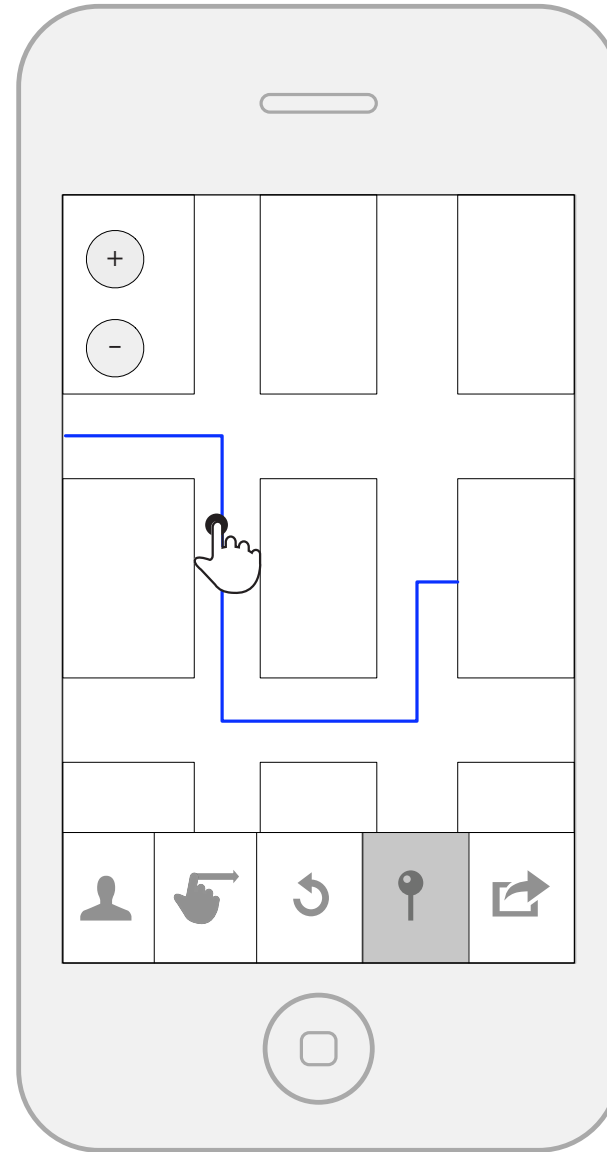
CHOOSE TO CONTINUE DRAWING AT ANOTHER SPOT ON THE MAP



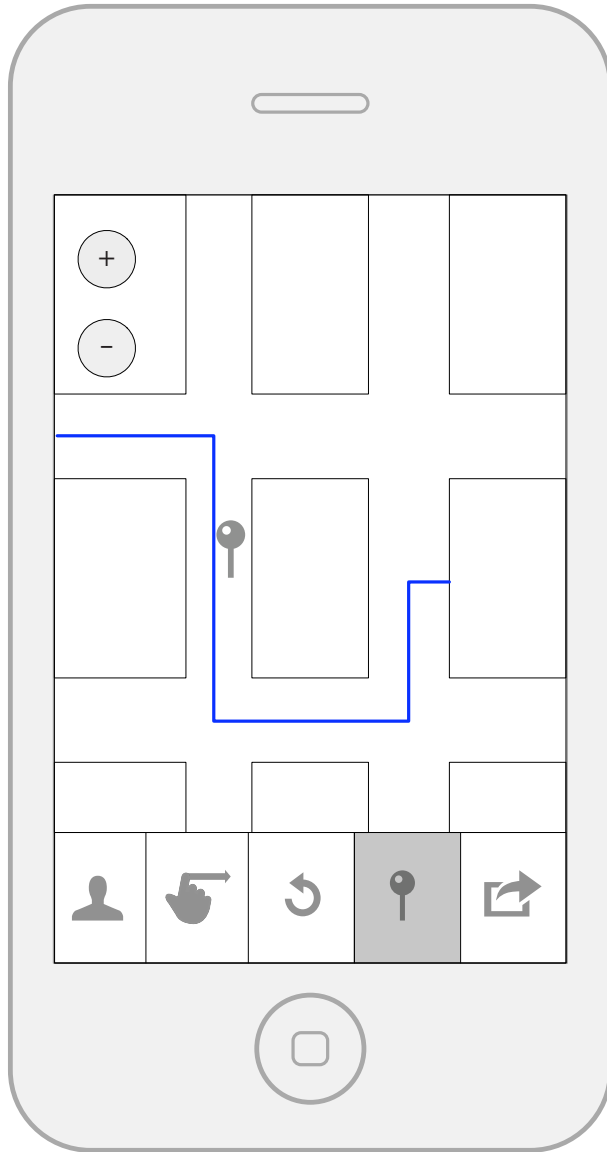
CHOOSE THE 'ADD PIN' TOOL



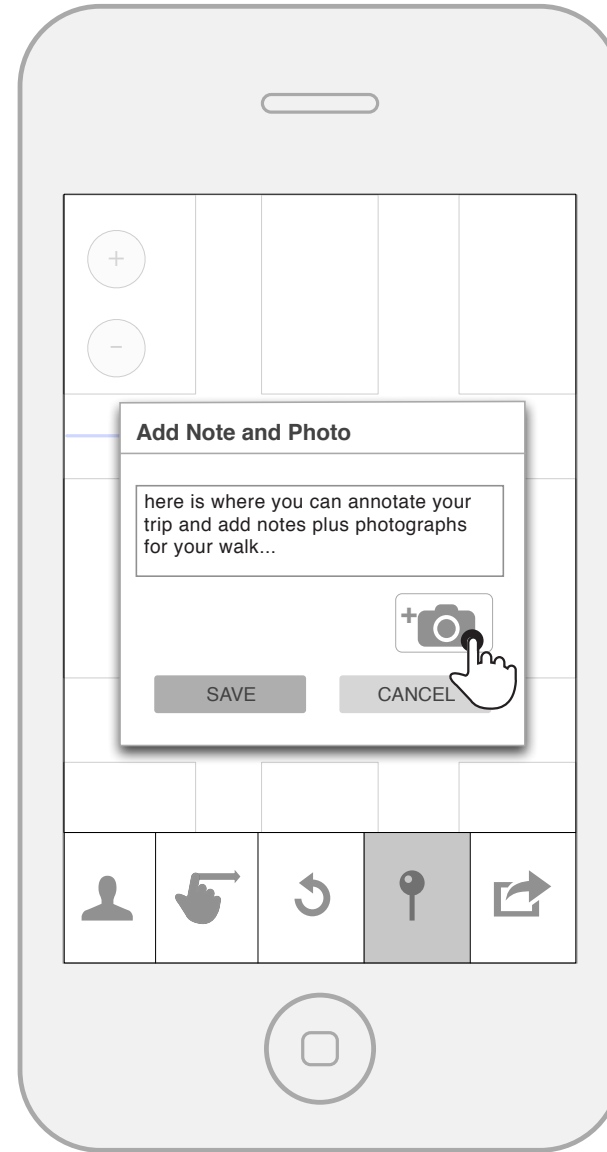
ADD PIN TO THE ROUTE



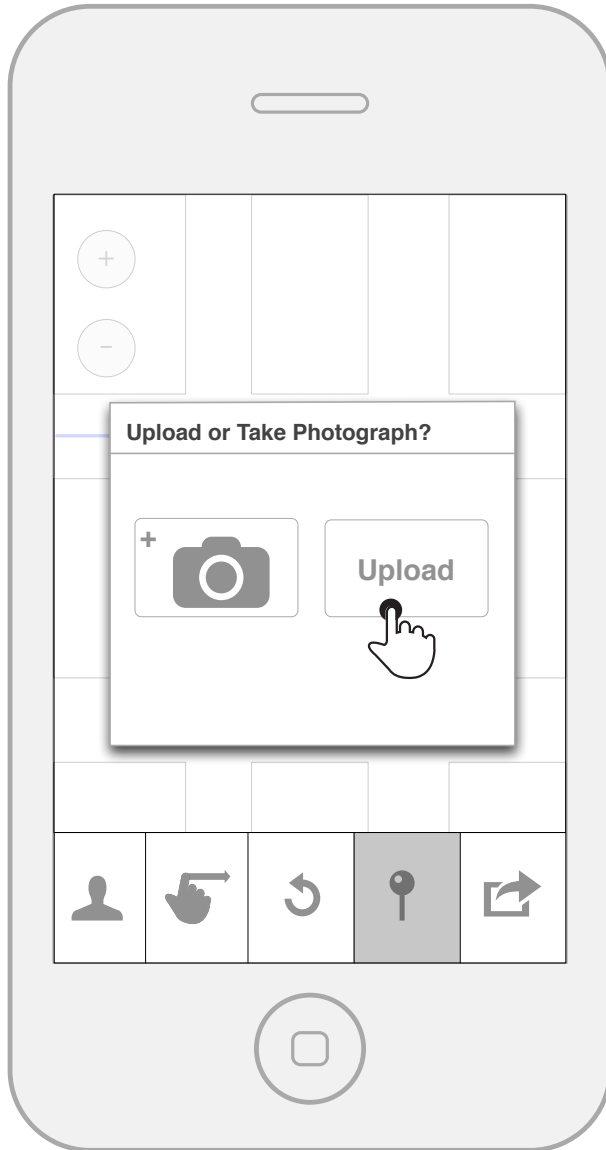
THE PIN DROPS ON THE MAP



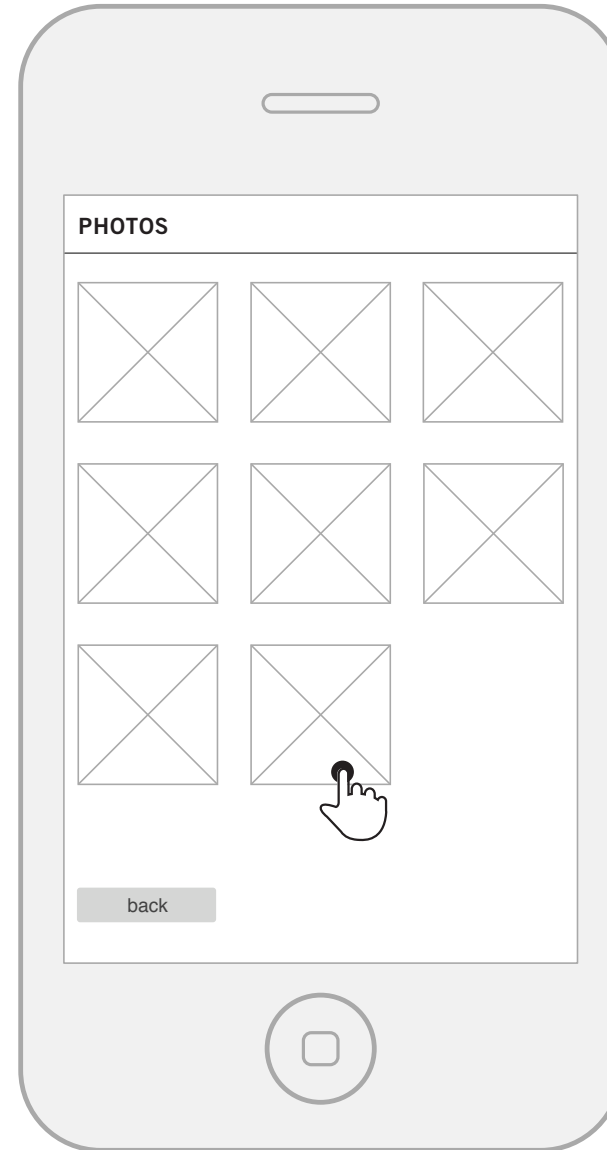
ANNOTATE THE WALK AND ADD IMAGES



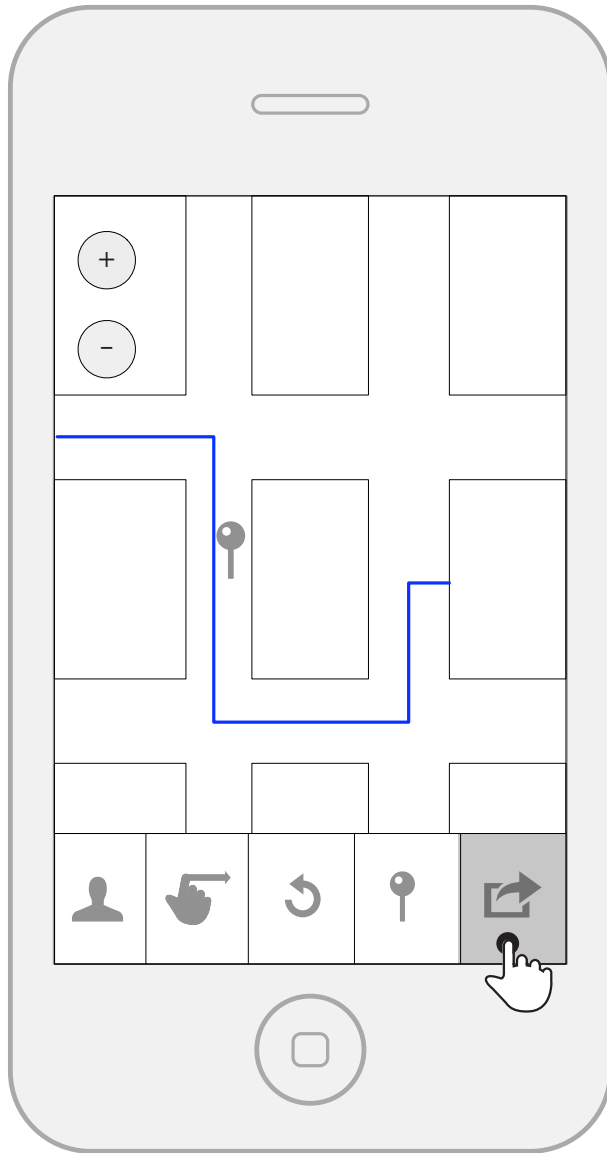
TAKE OR UPLOAD AN IMAGE



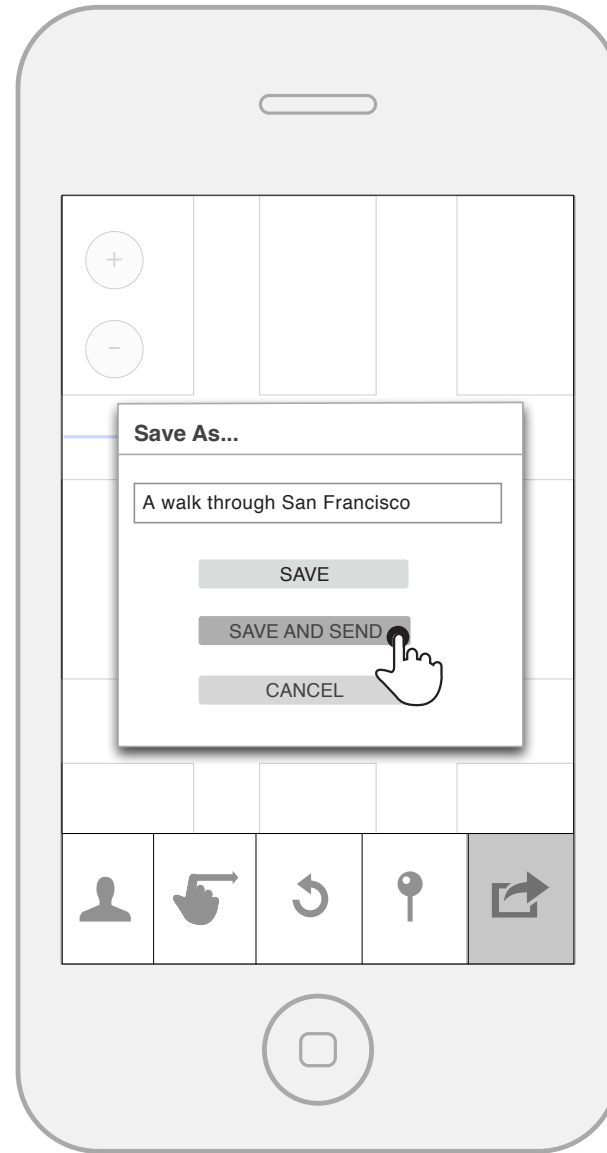
SELECT A PHOTOGRAPH



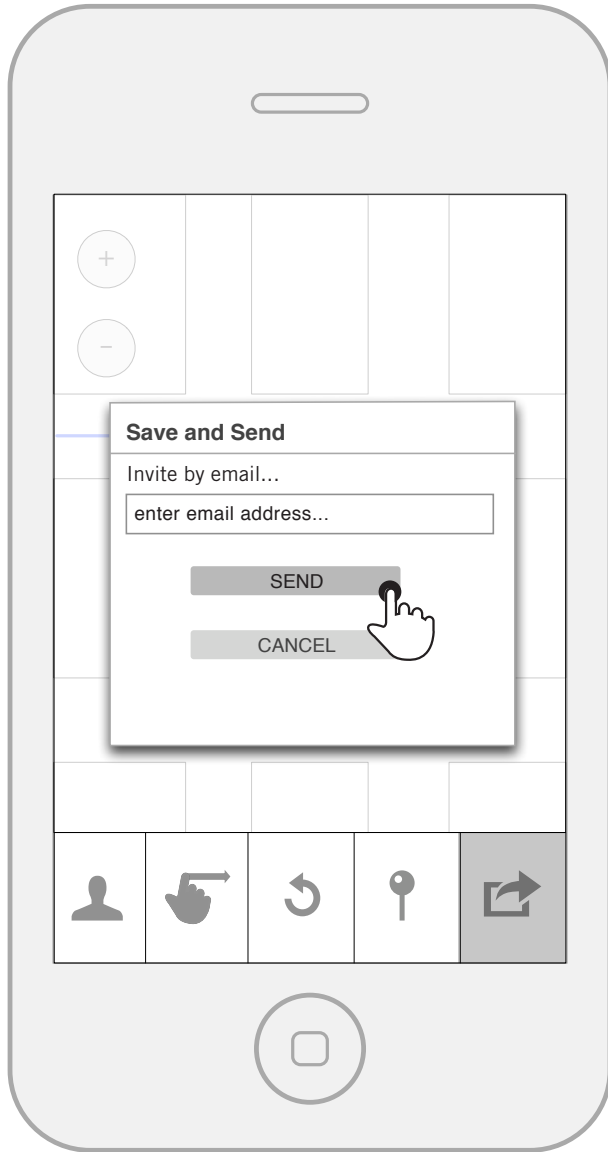
SAVE AND/OR SEND WALK



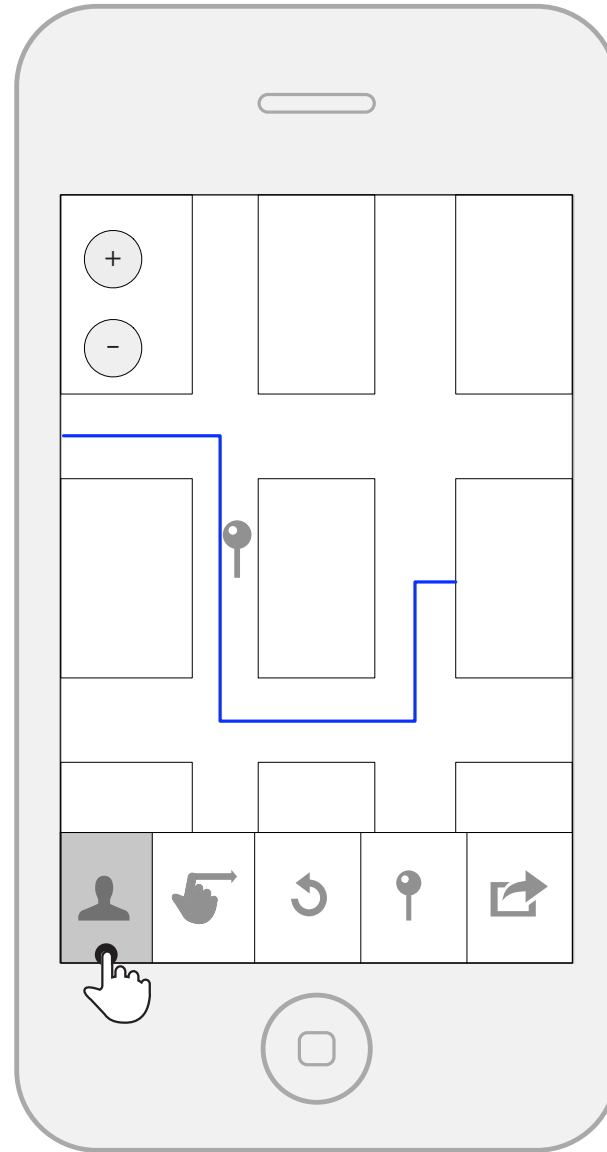
SAVE AS AND SEND TO A FRIEND



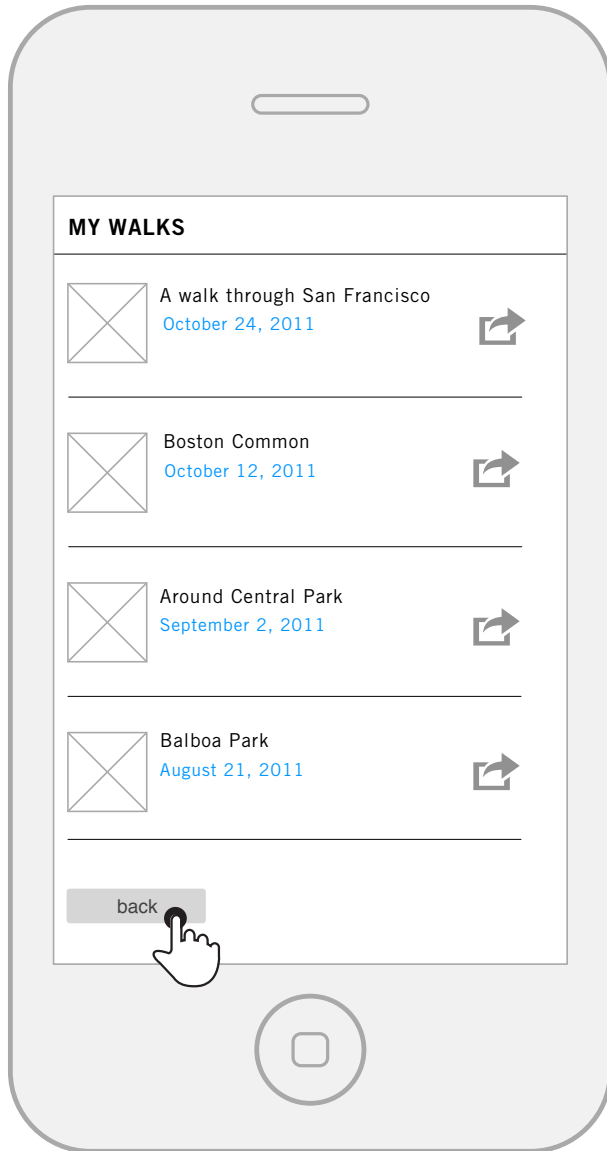
SEND TO EMAIL ADDRESS



VIEW SAVED WALKS



VIEW AND SEND ANY SAVED WALKS



AN ANNOTATED WALK

